

Our Vision

The Pathways to Partnership consortium envisions a statewide educational community with the necessary skill sets to prevent, reduce, and resolve conflicts building trust and mutual understanding between families and educational agencies. Our vision embraces resolving conflict at the lowest level, preserving relationships with all members of the IEP team, and ensuring the IEP process is the foundation for positive, equitable student outcomes for all students with disabilities. Our vision seeks to transform the way in which educators respond to conflict and dispute within the California special education system and Statewide System of Support (SSOS) by establishing a sustainable continuum for dispute prevention and resolution that is accessible to all. The program is based on three overarching pillars of support:

- ★ Family and Community Support and Conflict Prevention
- ★ Voluntary Alternative Dispute Resolution (ADR)
- ★ Facilitated Individualized Education Program (IEP) Meetings



Statewide Coverage

The Pathways to Partnership consortium includes Tehama and Ventura County Special Education Local Plan Area (SELPA), Tehama County Department of Education and Ventura County Office of Education. Pathways to Partnership has established and experienced leadership in designing model programs in Dispute Prevention and Resolution. The educational agencies of the Pathways to Partnership are located in both the northern and southern regions of the state. Pathways to Partnership has experience in rural, suburban, and urban regions and will be able to provide and adapt program design, development, and implementation support to the diverse populations of California. The geographic spread of the educational agencies is key to ensuring access for all educational partners.



Visit us on Social:



**Pathways
to
Partnership**

www.pathways2partnership.org



**Resolving conflict.
Preserving relationships.**

The Pathways to Partnership consortium envisions a statewide educational community with the necessary skill sets to prevent, reduce, and resolve conflicts, building trust and mutual understanding between families and educational agencies.



**Pathways
to
Partnership**
Connect • Collaborate • Support

Our Mission

The Pathways to Partnership consortium collaborates with all educational partners to build collective capacity, expertise, and resources in the prevention and resolution of conflict with a student-centered focus, in an environment of mutual respect, equity, and understanding, and with a mindset toward continuous improvement process.

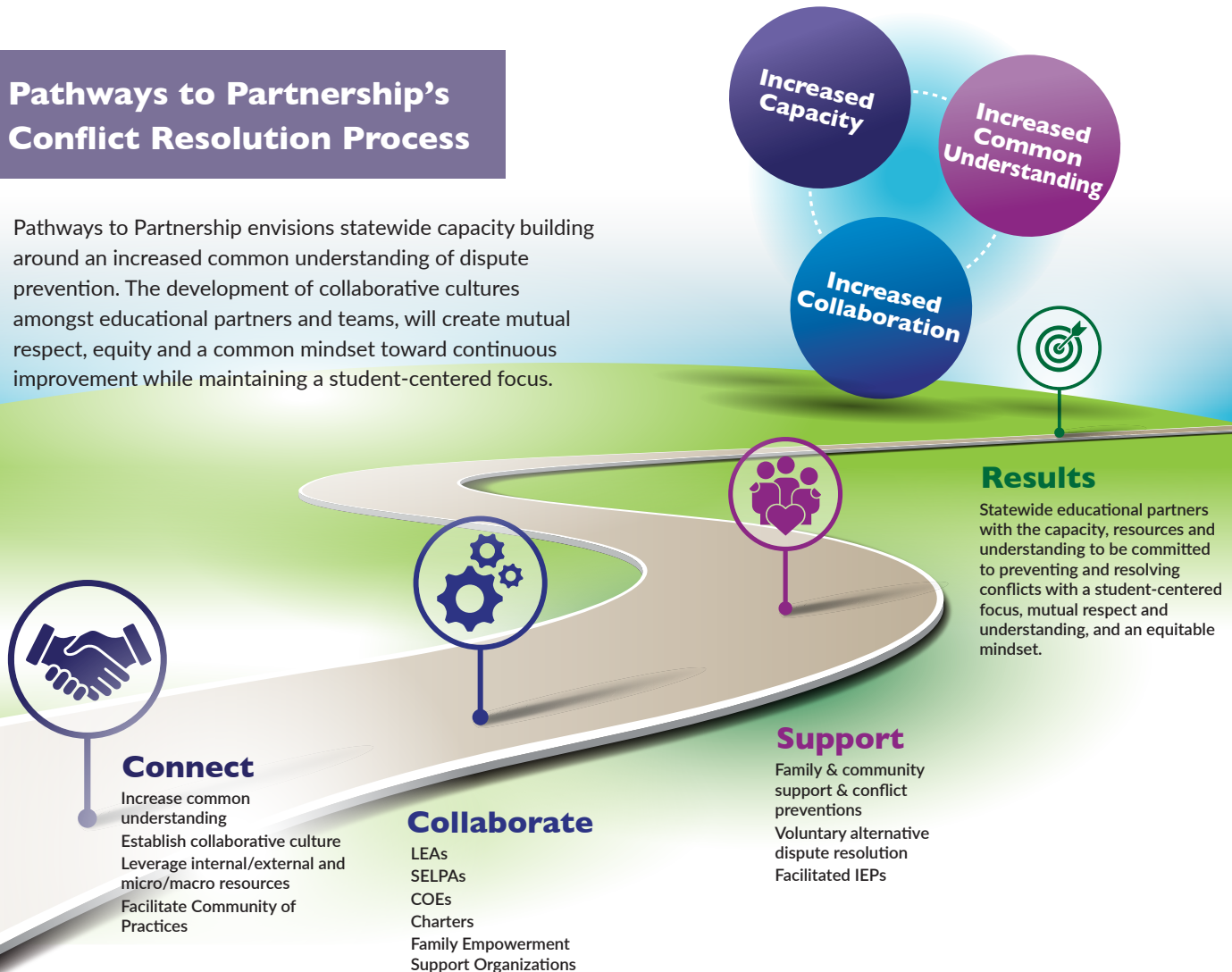


Our Partners



Pathways to Partnership's Conflict Resolution Process

Pathways to Partnership envisions statewide capacity building around an increased common understanding of dispute prevention. The development of collaborative cultures amongst educational partners and teams, will create mutual respect, equity and a common mindset toward continuous improvement while maintaining a student-centered focus.



Programs & Resources

Discover Pathways to Partnership engaging resources:

- ★ Technical Assistance
- ★ Community of Practices
- ★ Facilitated IEP Trainers
- ★ System Design to develop/enhance ADR Continuum
- ★ Dispute Prevention & Conflict Resolution
- ★ Trauma Informed Practices

And so much more...

Together, let's build a continuum of support for dispute prevention and resolution within the state of California, forging pathways to enhanced partnerships. We're here to connect, collaborate, and support. Reach out to us today at info@pathways2partnership.org



**Pathways
to
Partnership**

Connect • Collaborate • Support